



Orthodontics and Implantology

Welcome everybody!

TODAY, I will tell you about

- LEONE
- Our NEW Orthodontic Mini Implants
- Our Products for FIXED Appliances
- Rapid Palatal Expanders and Molar Distalizers
- The brand new

LEONE IMPLANT SYSTEM



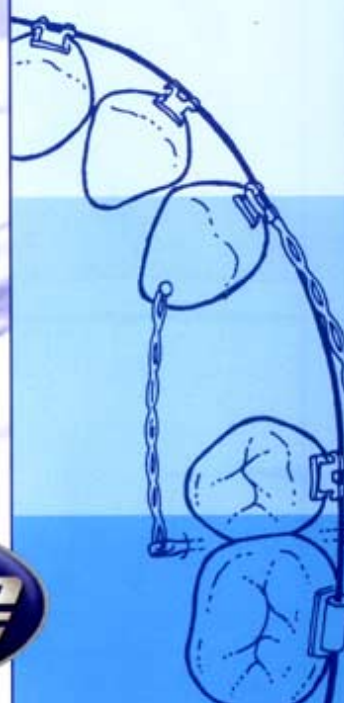
**MADE IN FLORENCE
SINCE 1935**



OUR NEW
ORTHODONTIC
MINI
IMPLANTS



**MINI
IMPIANTI
ORTODONTICI**



...IT'S
GOOD
TO HAVE
CHOICES!

Indications



- EXTRA anchorage for ORTHODONTIC MOVEMENTS

1. WHEN using other dental elements for anchorage is impossible
2. Or to obtain Orthodontic movements without loss of anchorage



The KIT



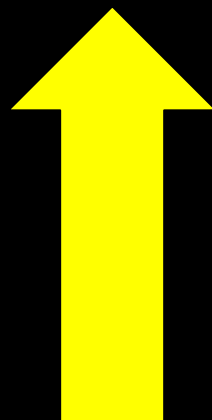
Ortodonzia e implantologia

Mini Orthodontic Implants KIT



The KIT contains 24 Mini Orthodontic Implants, 2 pieces For each length in the available diameters. Auxiliary instruments are also featured.

AUTOCLAVABLE!



DRILL DIAMETERS

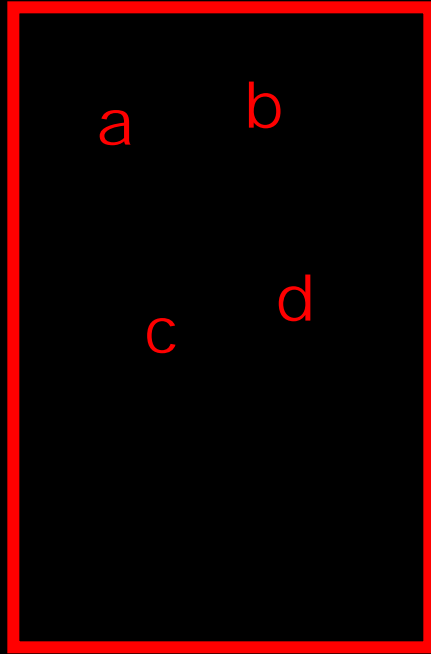
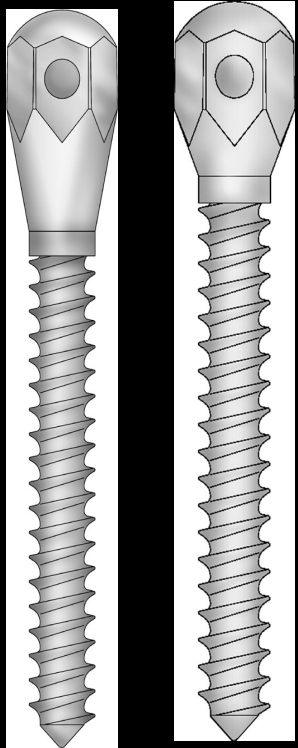
1,1 mm

1,3 mm

1,5 mm

1,7 mm





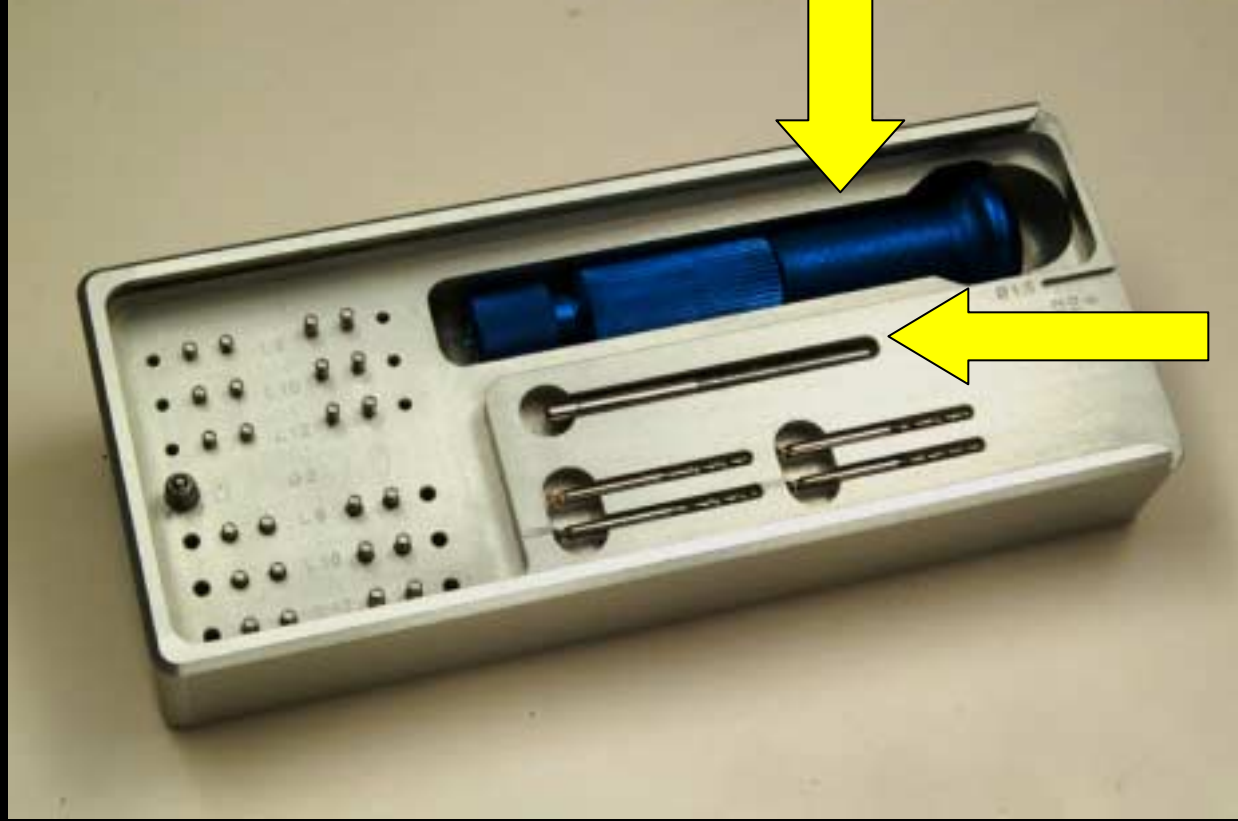
Mini Orthodontic Implants



a/c. Low Head: 1.5 or 2.00 mm Ø. Lengths: 8 - 10 - 12 mm

b/d. High Head: 1.5 or 2.00 mmØ. Lengths: 8- 10-12 mm

screwdriver



Screwdriver
tip





Length – Check area for Mini Implants

One for each available diameter, with clearly visible Notches to check length of Mini Implants.



Surgical Procedure



- *1-Preparing your Implant Site*
- *2- Insertion of Mini Implant*
- *3-Removing your Mini Implant*



1.



Lift a large enough
Portion of gingiva



2.



Detach soft tissues



3.

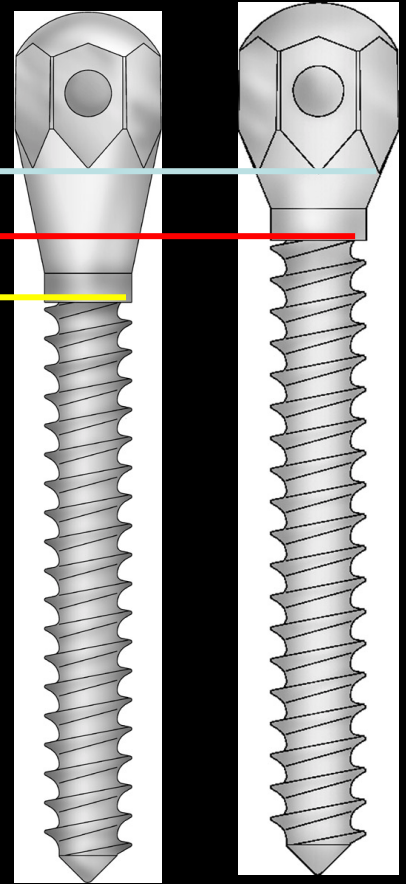


Measure thickness of
Soft tissues around
Implant site

4.



Transmucosal
Neck



Choose length and \emptyset of
Implant, then choose the right
Transmucosal neck according
to thickness of soft tissue
Around Implant site.

5.



It is now possible to perform Osteotomy using the right drill powered by Micromotor



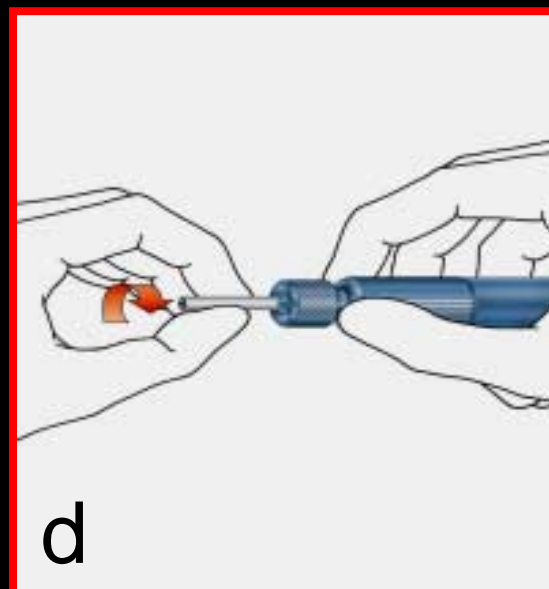
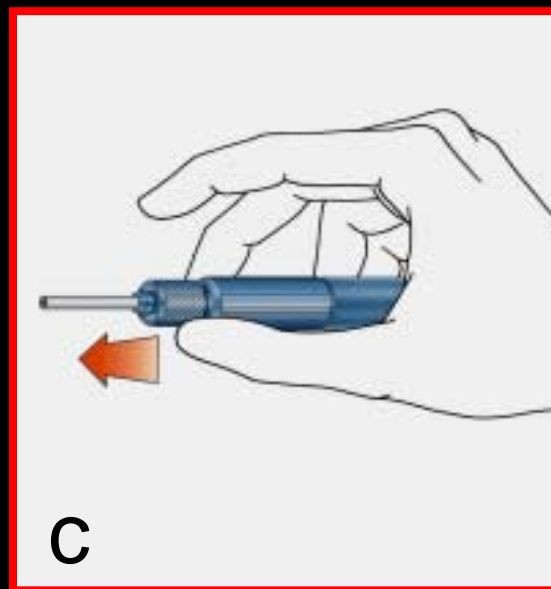
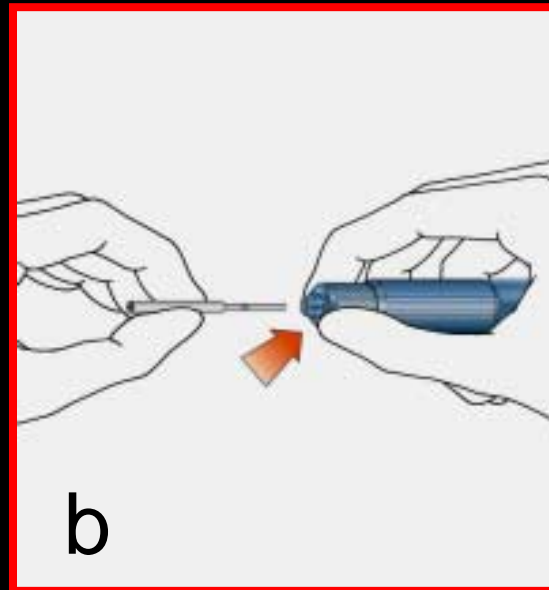
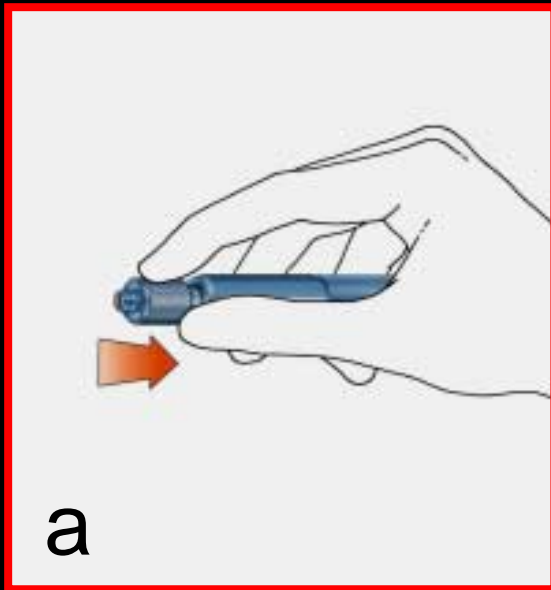


Three Notches are marked on every drill, one for each available Length of Implant.

12 mm
10 mm
8 mm

- *2 – Insertion of the
MINI IMPLANT*

1. Insert tip into screwdriver



2. Position screwdriver perpendicular to Mini Implant



Careful now! This must be done with great precision,
To ensure good stability and hold.

PERPENDICULAR!

3.



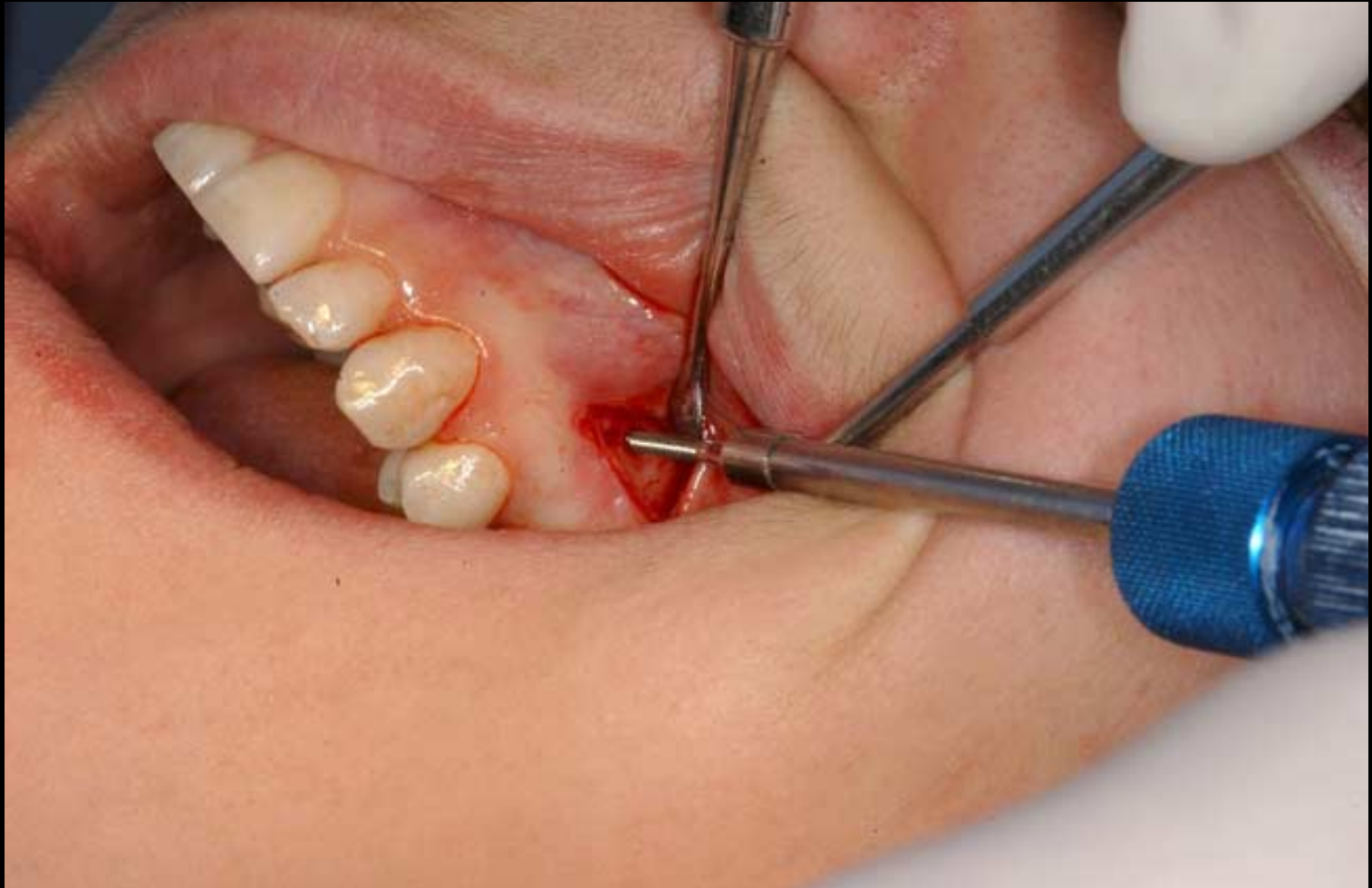
Look for the exact engagement
Of the hexagonal head of your
Mini Implant

4.

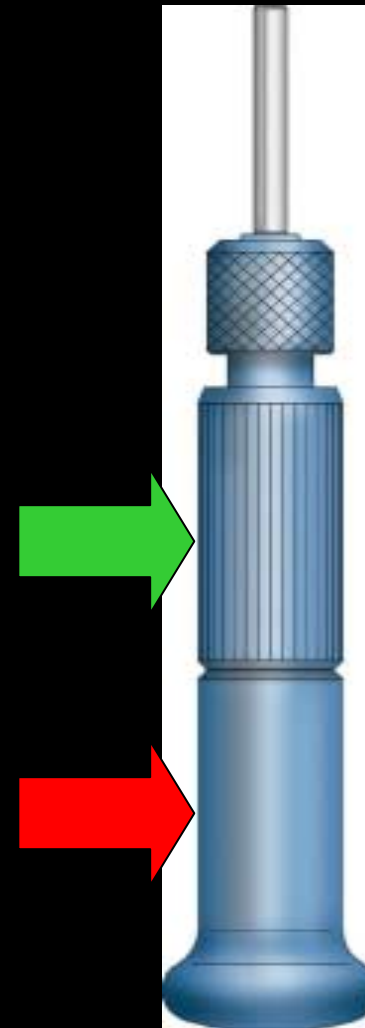


Apply enough pressure on
Screwdriver to lock Implant
Head into tip

5. Insert Mini Implant into Implant Site, then screw it in with clockwise movement.



6. Rimmed centre section of screwdriver will rotate, end section will not.



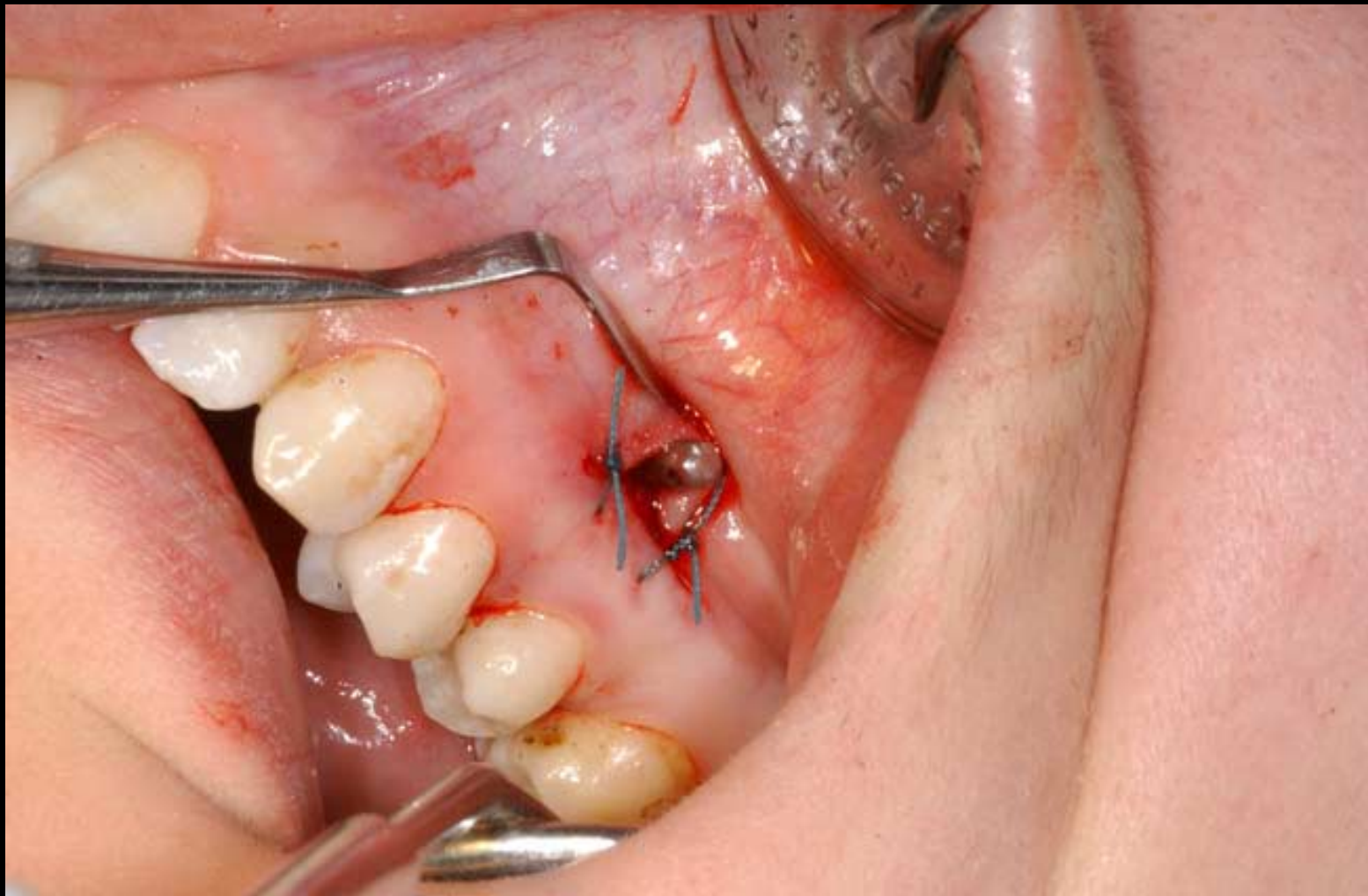
7.



Screw in until head of Mini Implant is level with bone crest



8. Suture



- *Removing Mini Orthodontic Implants*



Ortodonzia e implantologia

LEONE Mini Orthodontic Implants
are manufactured using
surgical grade stainless steel,
therefore they do not promote

OSSEOINTEGRATION

...so they are easy to remove

1.



Position screwdriver tip around Implant head
and look for hexagonal engagement

2.



Apply enough pressure on the head to get a good hold

3.



Then begin to turn counter-clockwise.

Using Mini Orthodontic
Implants in conjunction
with Various types of
Appliances

- Wait until healing of gum tissue has occurred (approx. 2 weeks)
- Attach traction devices (coils, wires, elastics, chains) using hole in head of Mini Implant



Some orthodontic
Movements
Obtainable with
Mini Implants



Inter-arch Extrusion

Anterior Inter-arch Intrusion

Posterior Inter-arch intrusion

Disengagement by Surgery (usu. Canines)

Orthodontic Anchorage (es. Following Dist.)

Orthodontic Anchorage during Distalization

Some cases

Kindly supplied by Dr. Fortini, Dr. Cambi

Estrusione inter-arcata

Intrusione intra-arcata settori anteriori

Intrusione intra-arcata settori posteriori

Disinclusioni chirurgiche (canini ecc.)

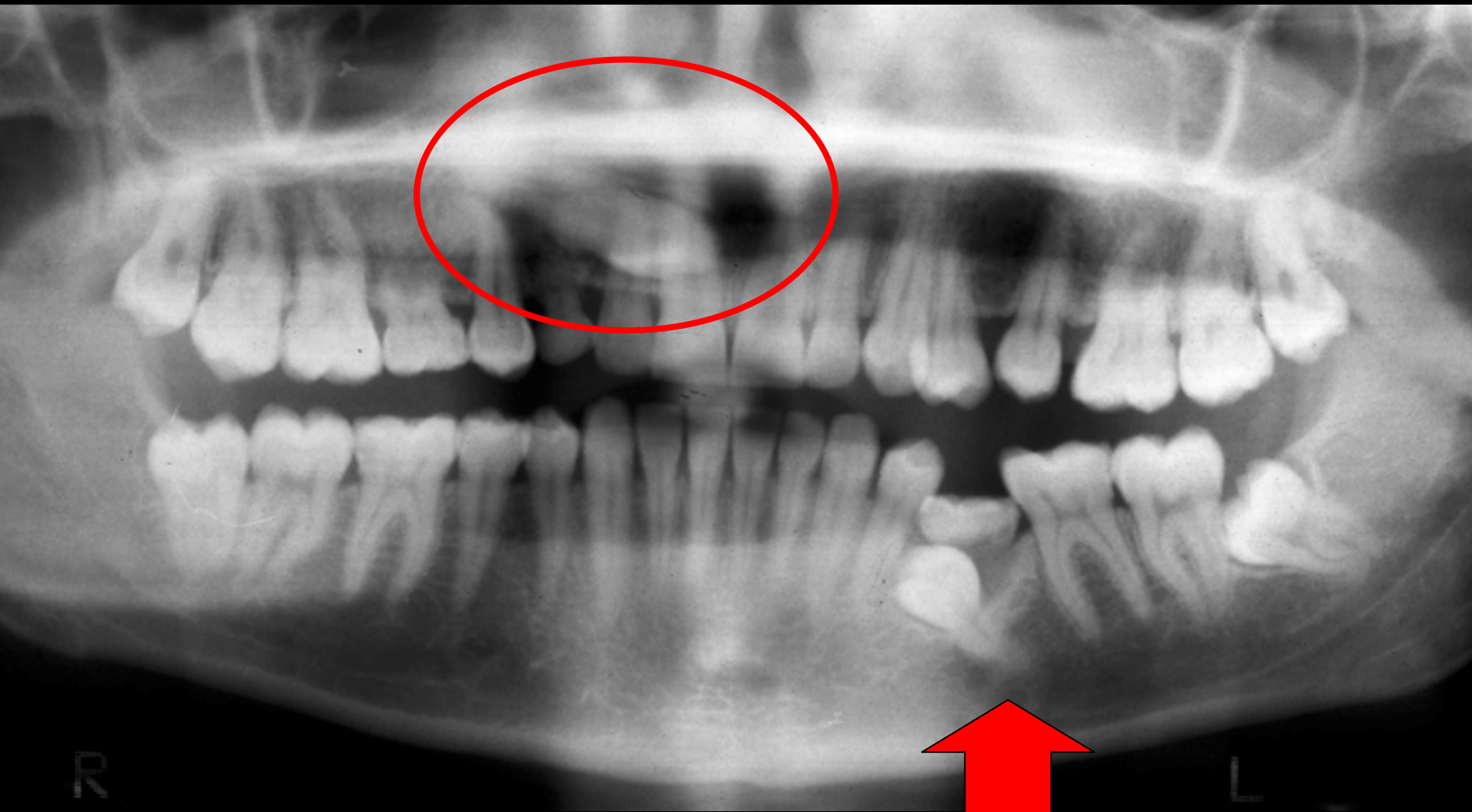
Ancoraggio ortodontico (es. dopo distalizz.)

Ancoraggio ortodontico per distalizzazione



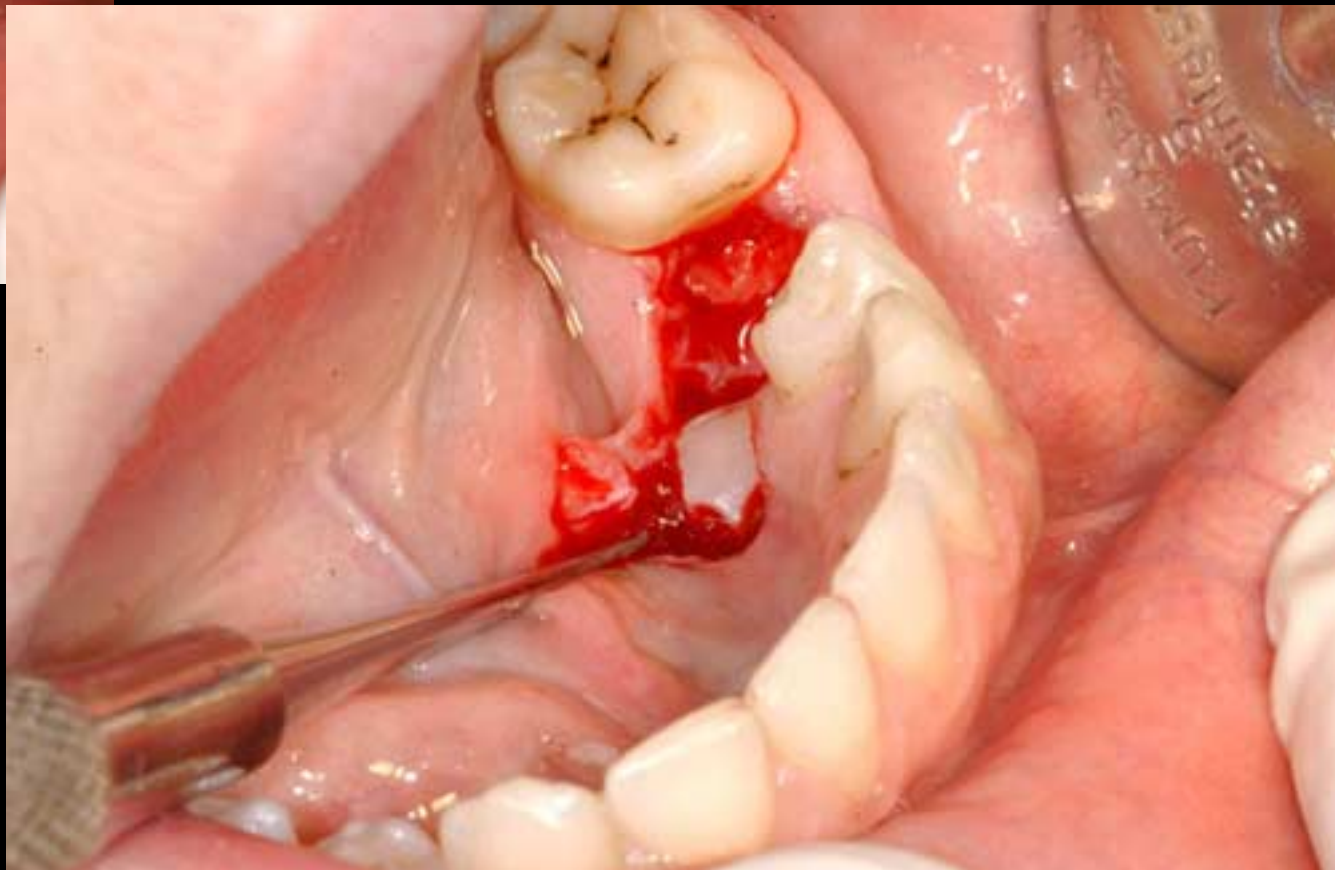














Inter-arch Elastic Traction



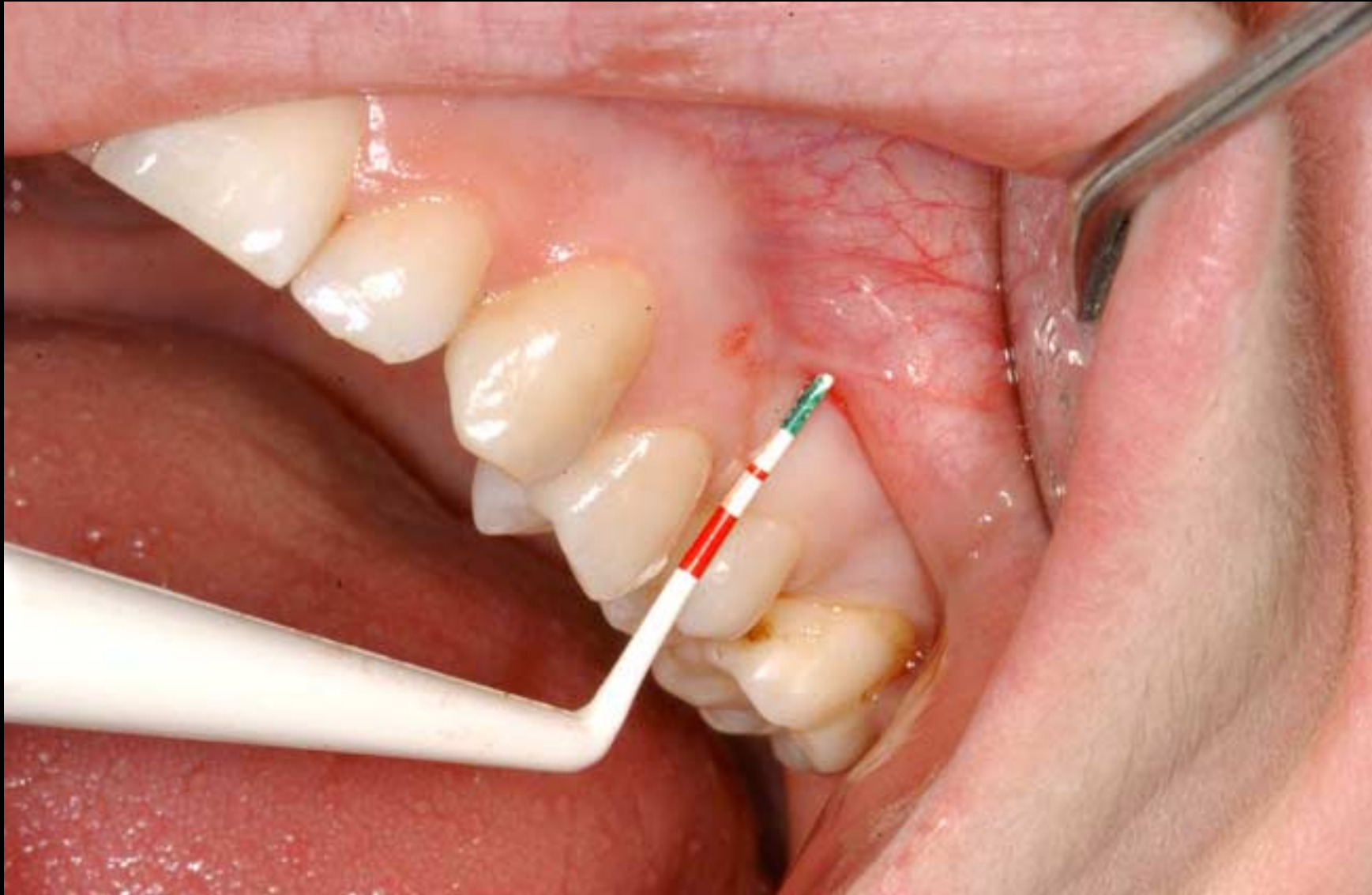


Stainless steel screw for Orthodontic movement





Evaluating bone quantity around implant site



Do I have enough bone there to accommodate implant?



In this case the answer is yes. Roots Are in a very favourable position



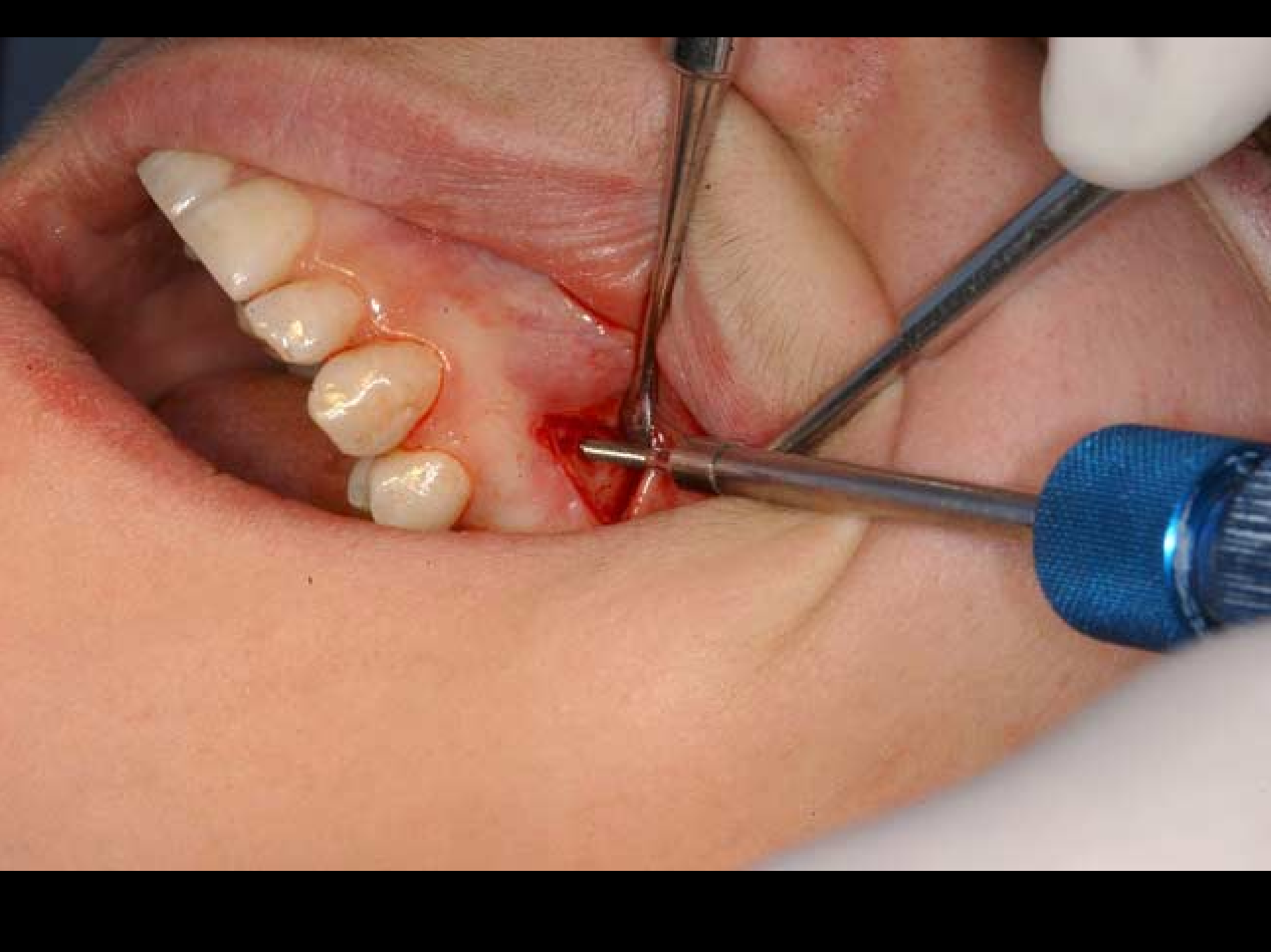
Still unsure?.

A safe and quick way to evaluate a possible Implant site

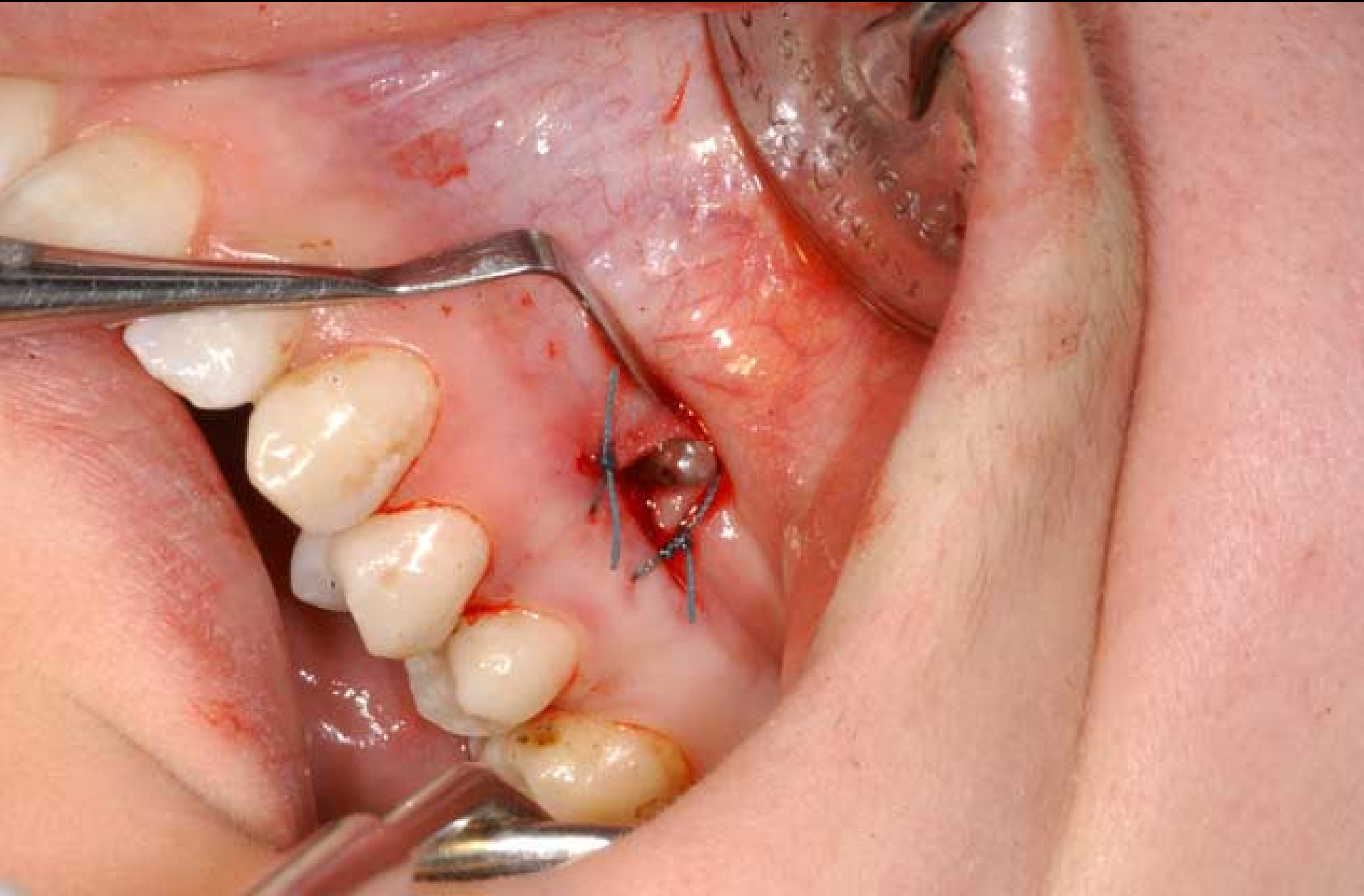






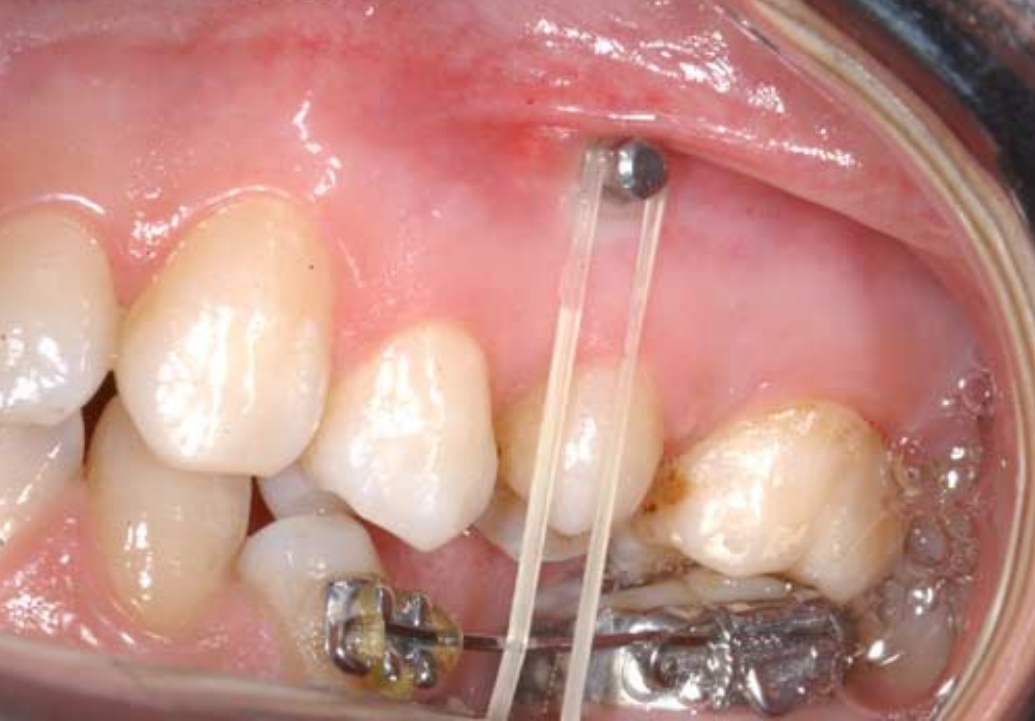








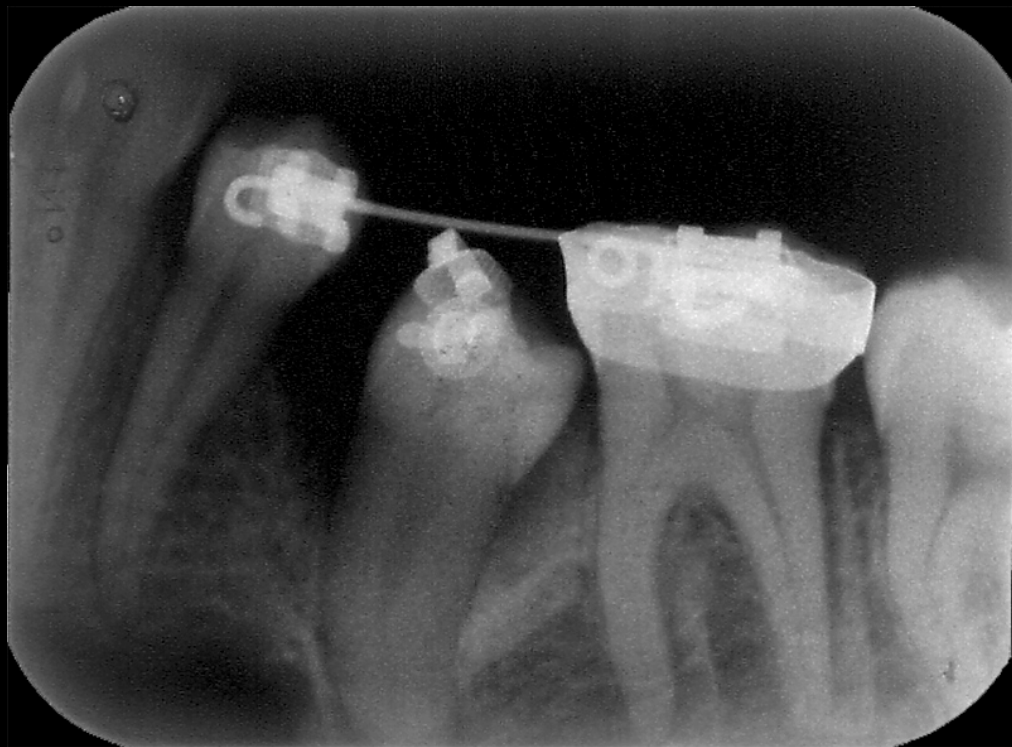




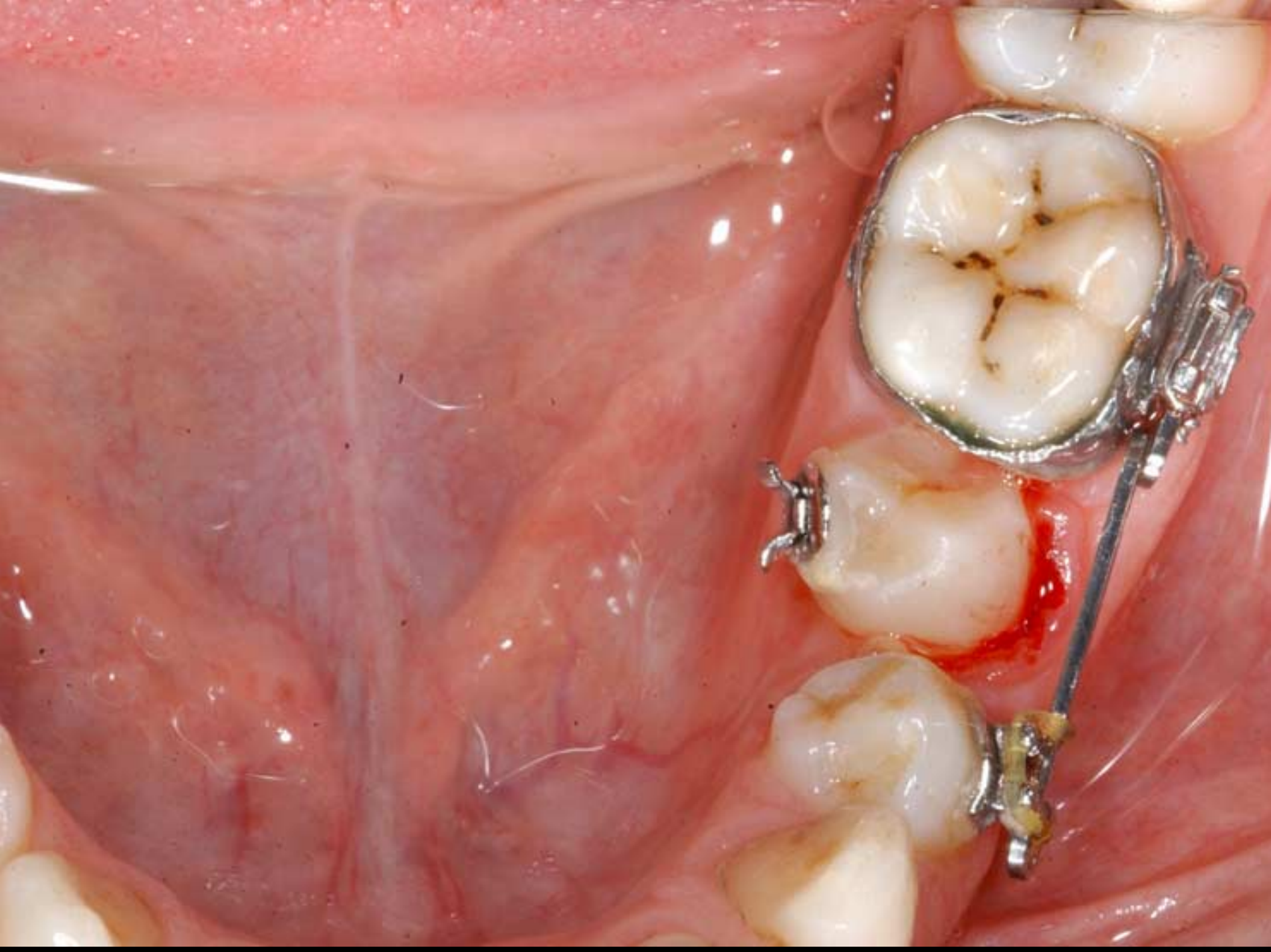


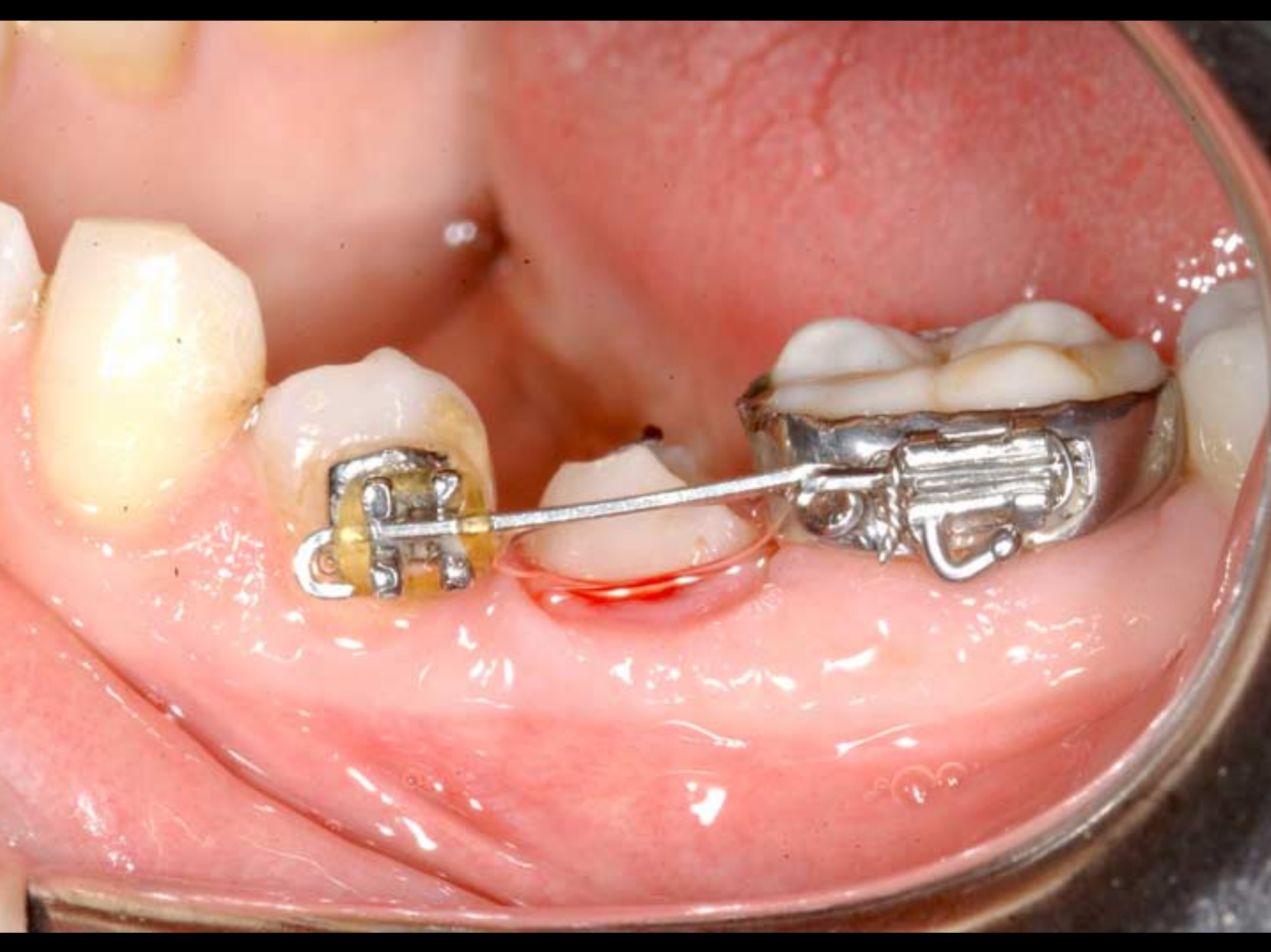


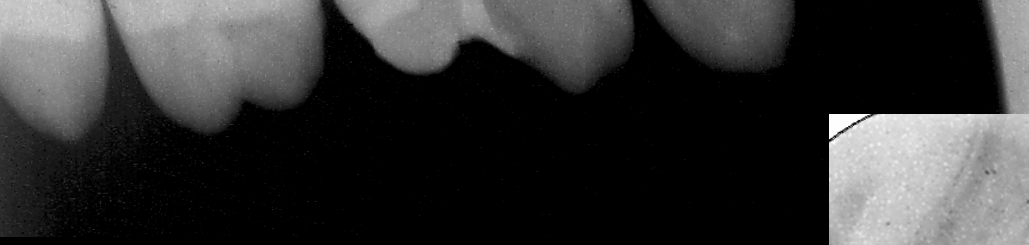












Lower arch Partial Banding





It's time to remove Mini Implant











Screw is removed by counter-clockwise turns



Implant site immediately after removal of screw



Approximately 20 mins. later



Intra-arch intrusion of anterior section







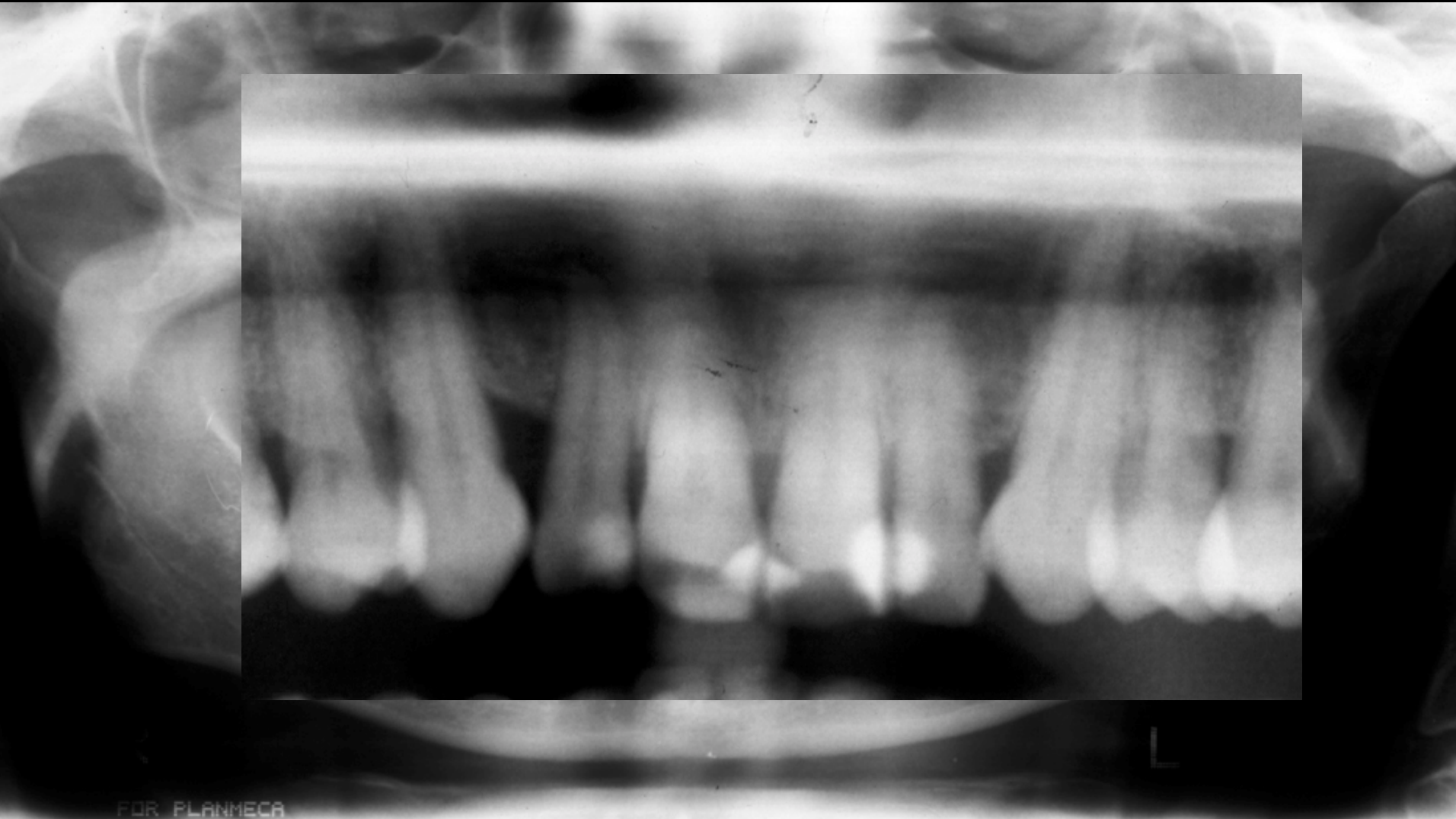








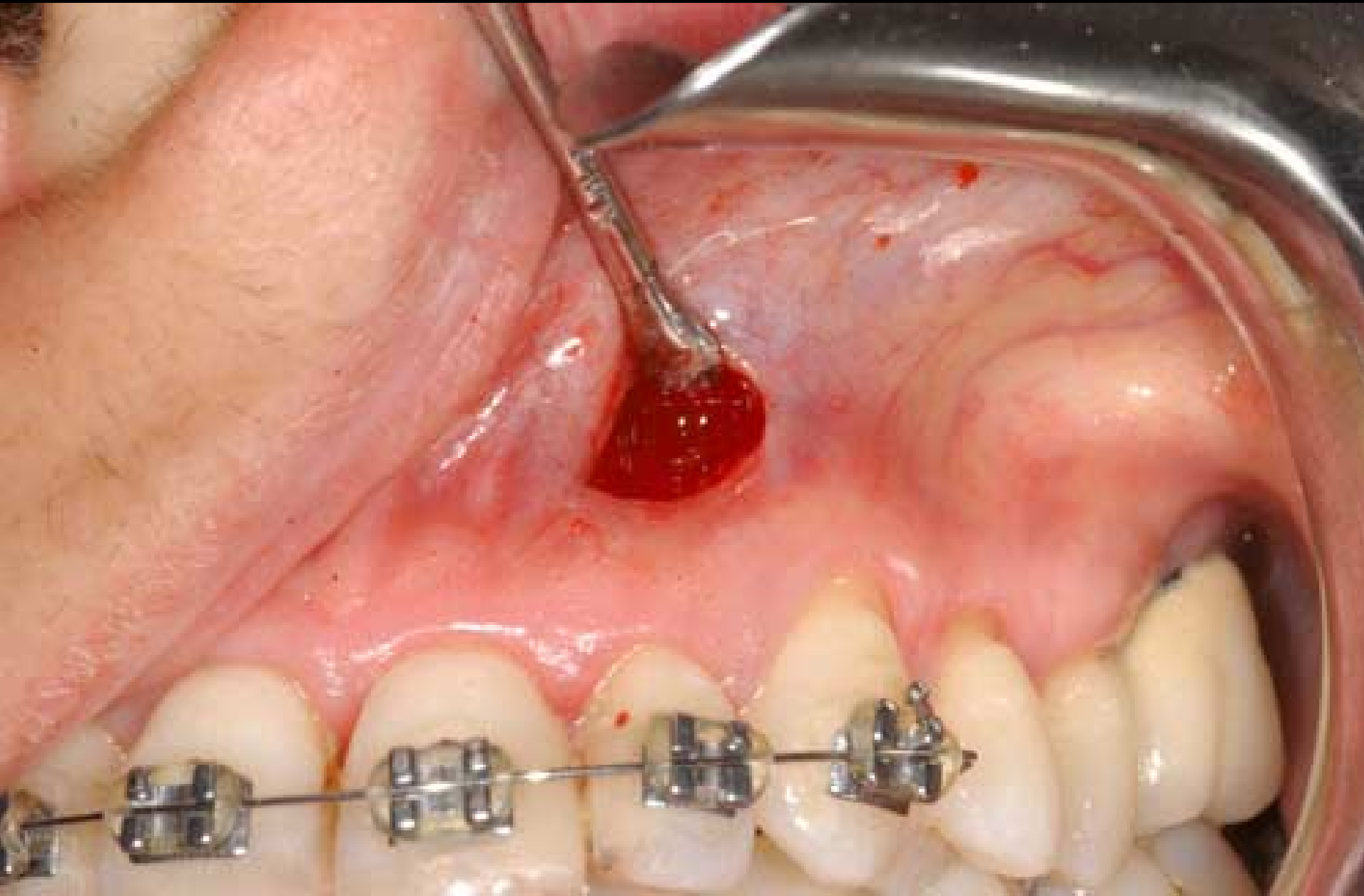
X-ray view of involved area



Periodontal evaluation in view of surgery














	Ø mm	lunghezza mm
testa alta 	1,5	8
		10
		12
	2	8
	10	
	12	
testa bassa 	1,5	8
		10
		12
	2	8
		10
		12

FRESE PER MINI IMPIANTI ORTOD

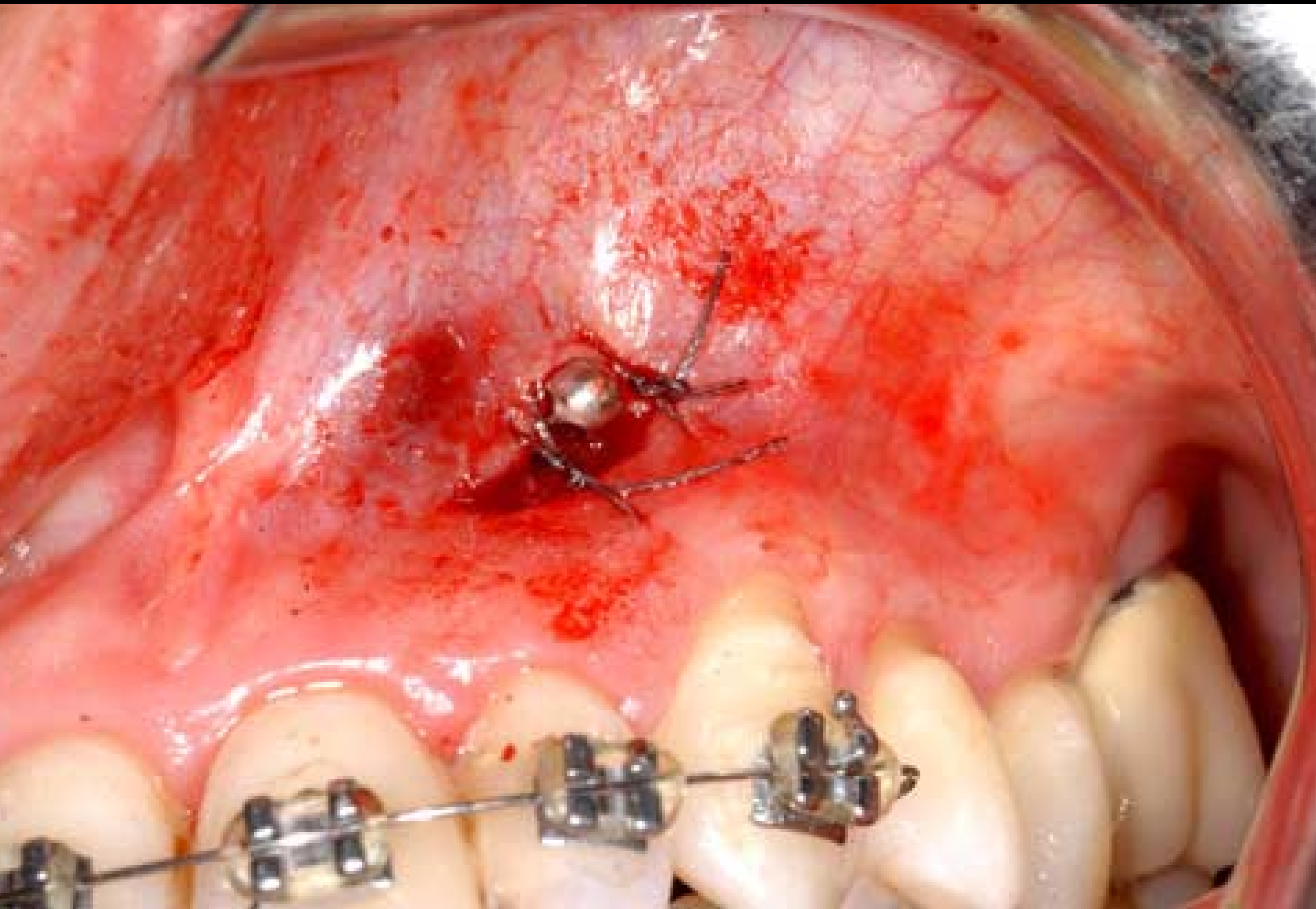
	Ø mm	lunghezza mm
	1,1	12
	1,3	12
	1,5	12
	1,7	12

















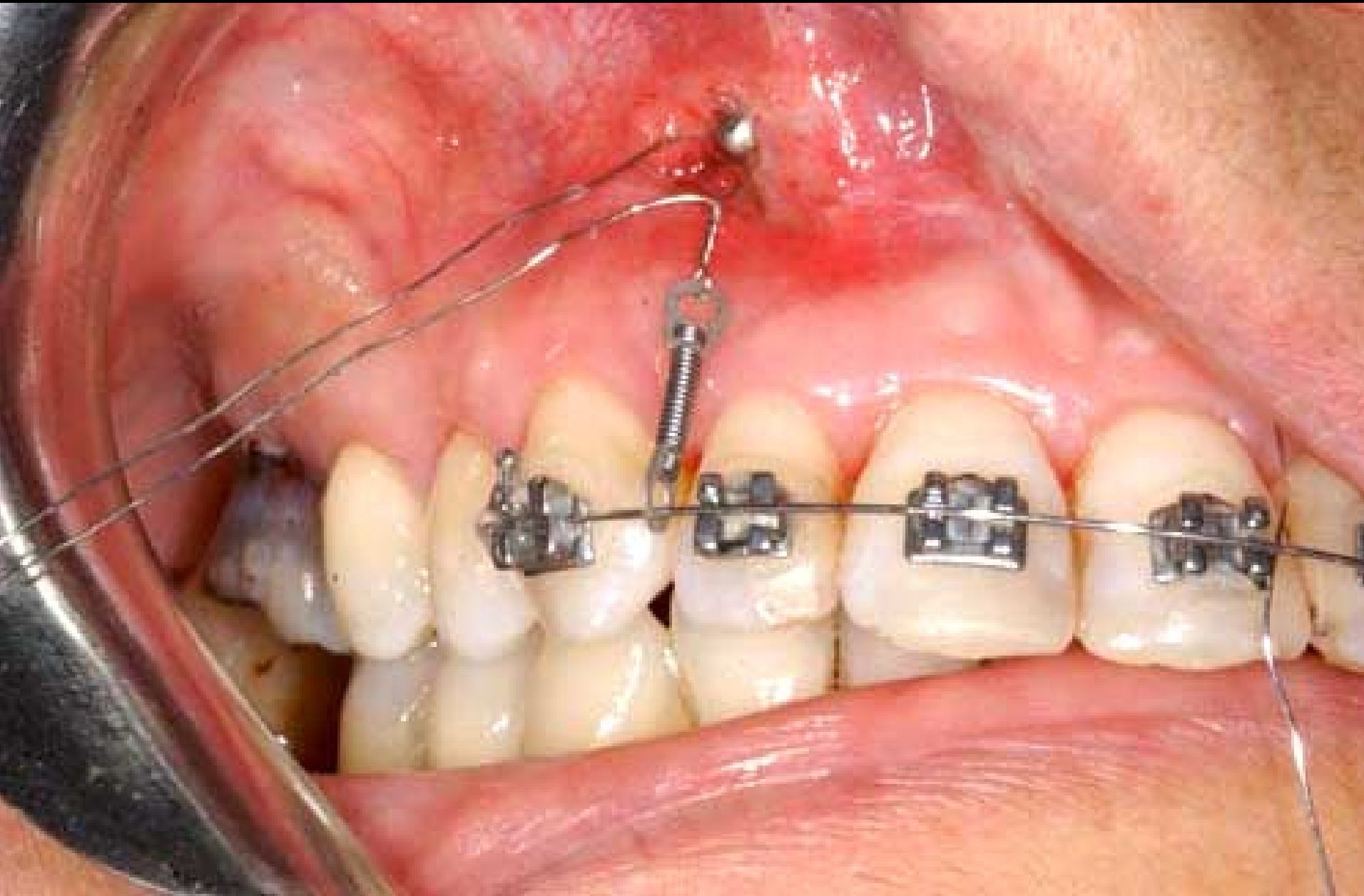




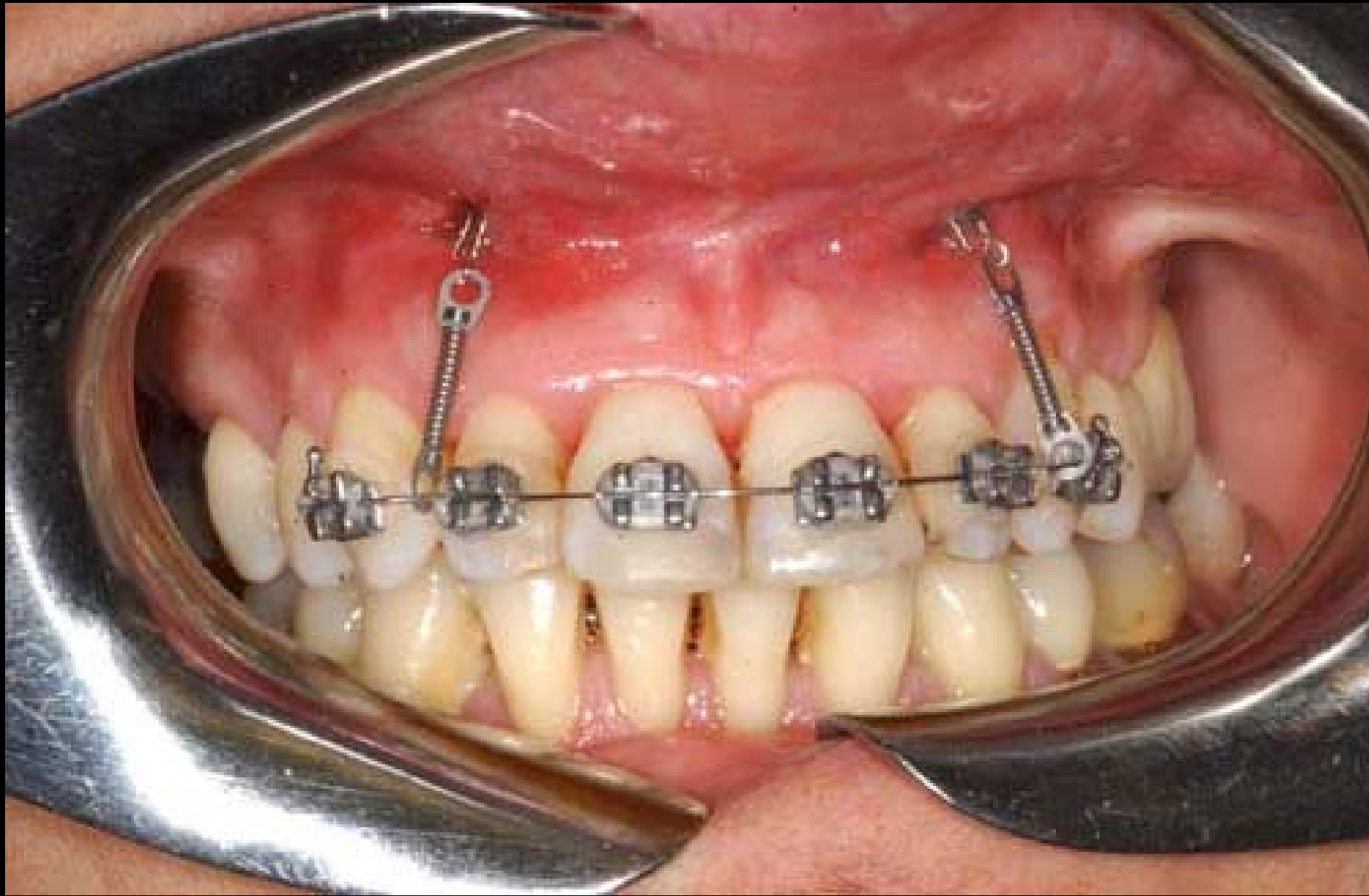


...titanium spring coils (150 gr.)

















Estrusione inter-arcata

Intrusione intra-arcata settori anteriori

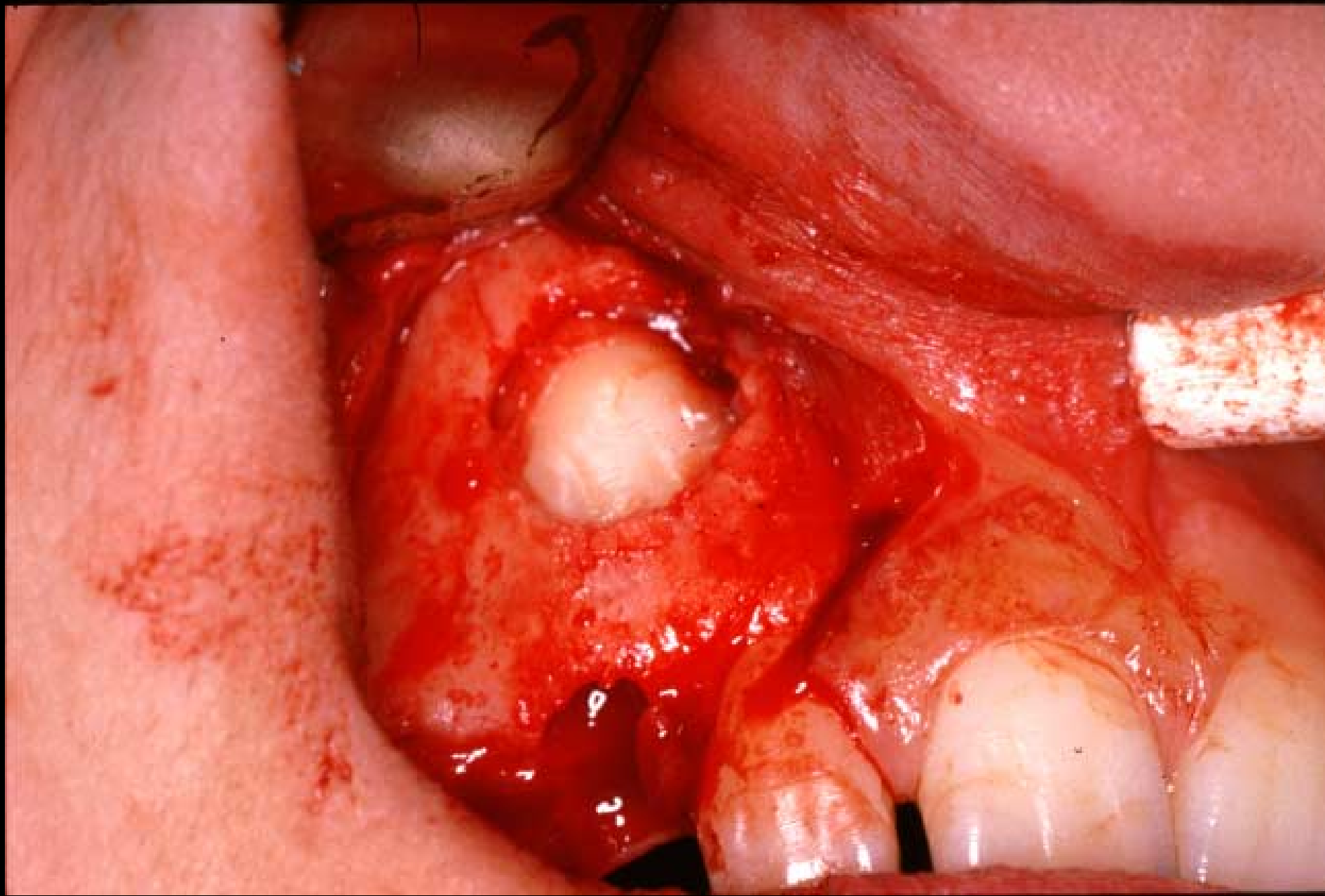
Intrusione intra-arcata settori posteriori

Disengagement of canine by surgery

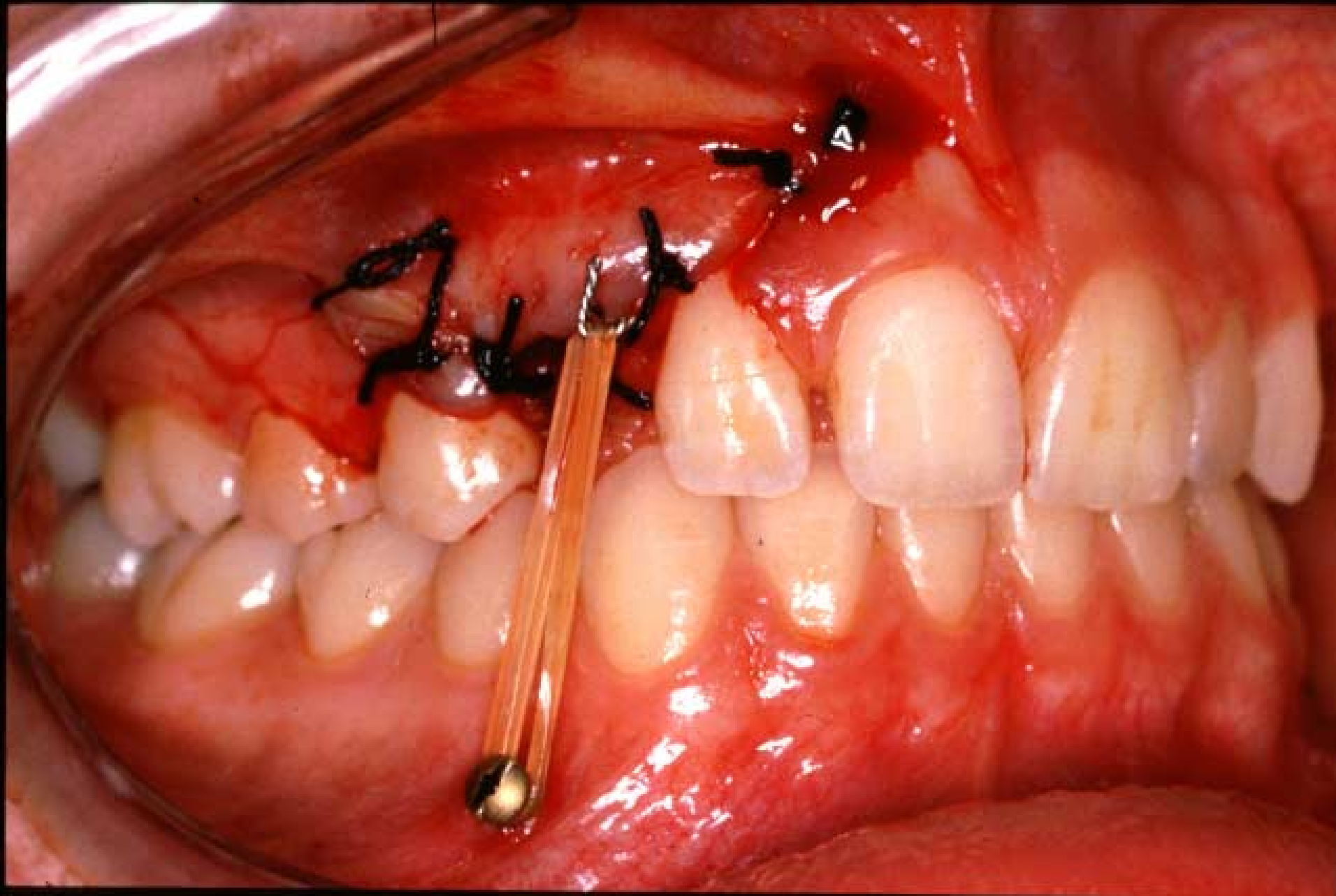
Ancoraggio ortodontico (es. dopo distalizz.)

Ancoraggio ortodontico per distalizzazione



















MINI IMPIANTI PER ANCORAGGIO ORTODONTICO

